



GAT MONTHLY MEMBERSHIP PROGRESS REPORT

Results as of: 7/31/2021

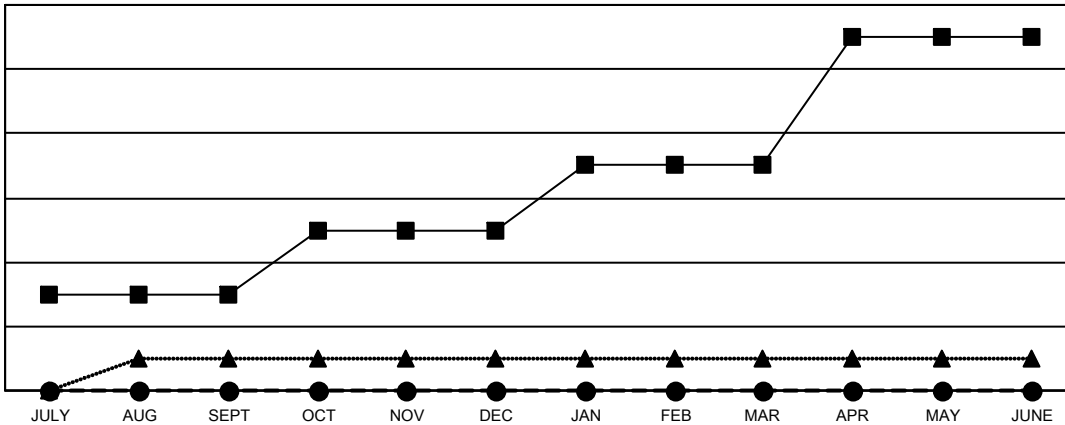
Multiple District 25

LOCATION: INDIANA

Clubs			
RESULTS FOR 2021-2022			
QUARTER	NEW CLUB GOAL	NEW CLUBS	DROPPED CLUBS
JULY/AUG/SEPT	3	0	4
OCT/NOV/DEC	2	0	0
JAN/FEB/MAR	2	0	0
APR/MAY/JUNE	4	0	0

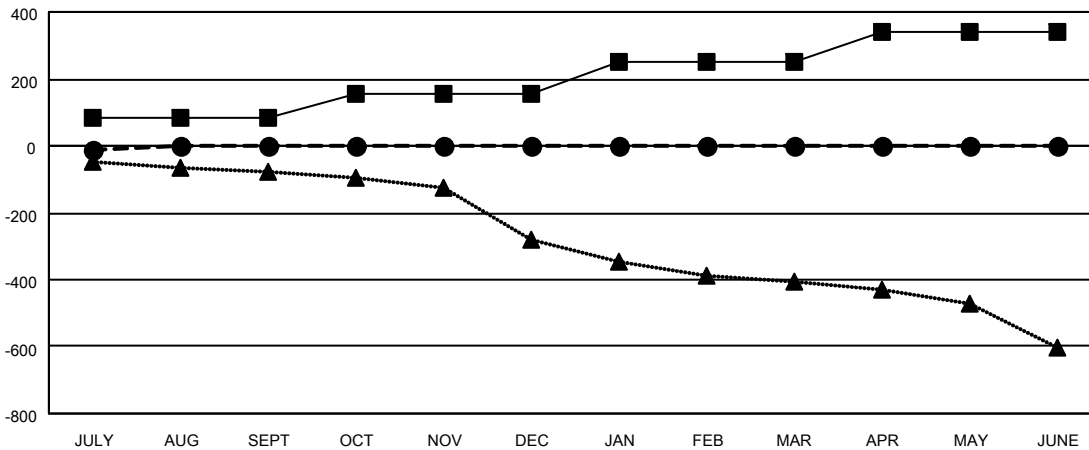
Members			
RESULTS FOR 2021-2022			
QUARTER	MEMBER GROWTH NET GOAL	MEMBER GROWTH ACTUAL	DROPPED MEMBERS ACTUAL (including transfers)
JULY/AUG/SEPT	81	72	70
OCT/NOV/DEC	76	0	0
JAN/FEB/MAR	93	0	0
APR/MAY/JUNE	88	0	0

GOALS AND ACTUAL NEW CLUBS CUMULATIVE



- - CURRENT YEAR GOALS FOR NEW CLUBS
- - CURRENT YEAR ACTUAL NEW CLUBS
- ▲ - LAST YEAR ACTUAL NEW CLUBS

GOALS AND ACTUAL MEMBERS CUMULATIVE



- - MEMBER GROWTH NET GOAL
- - MEMBER GROWTH ACTUAL
- ▲ - LAST YEAR MEMBERSHIP ACTUAL

DROPPED CLUBS: 4	
<u>DROPPED MEMBERS</u>	
DECEASED	11
CLUB CANCELLED	0
OTHER	59
TOTAL	70

39 CLUBS OF 355 ADDED 1 OR MORE NEW MEMBERS

[CLICK HERE FOR CUMULATIVE MEMBERSHIP DATA](#)

<u>GENDER DISTRIBUTION</u>	
MALE	6,081 (69.51%)
FEMALE	2,668 (30.49%)
TOTAL FAMILY UNIT MEMBERS	2,122
FAMILY MEMBERS PAYING HALF DUES	1,083